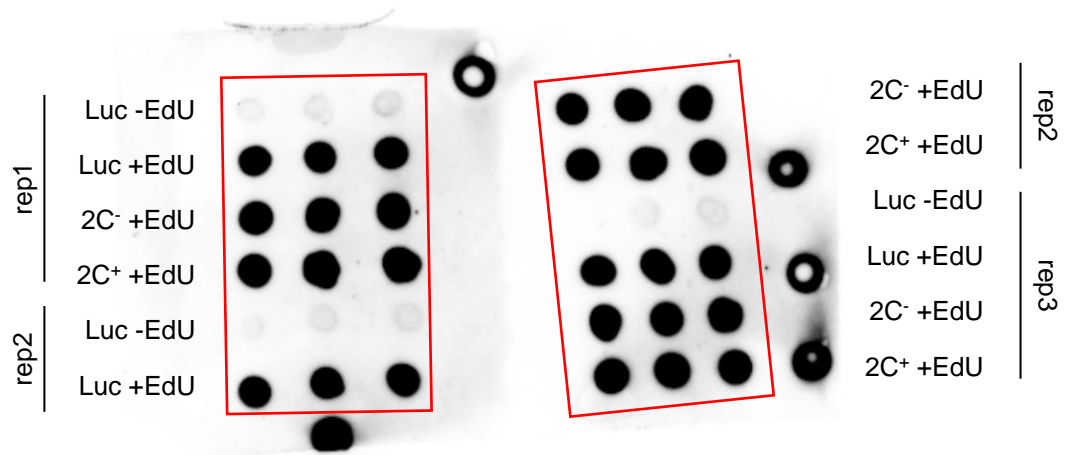


Anti-H3



Anti-Vinculin

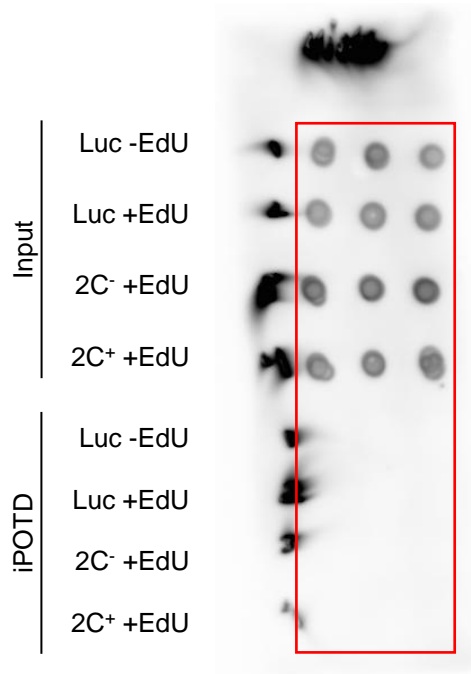


Figure 2-figure supplement 1, Source Data 2. Original membranes corresponding to Figure 2-figure supplement 1A. Independent DNA-mediated chromatin pull-down (iPOTD) eluates from sorted luciferase, 2C⁻ and 2C⁺ replicates in the absence or presence of EdU (\pm EdU) were analyzed by dot blot with an anti-H3 antibody (top). Input and eluates from equivalent preparations were incubated with an anti-vinculin antibody (bottom). Each condition was spotted in triplicates.